



PMA Pulse

Vol. II, No. 4 December 2017

Individual Health- Under 65

We are in full swing of Open Enrollment (OE)! Hopefully, everything is running as smoothly as possible for you all. It's a good idea to be contracted with National General and Pivot for short-term carriers. Both offer the 3x4 option (up to 12 months of coverage) and they will be available outside of OE. As a reminder, OE ends 12/15/17 and PMA will return to normal business hours on Fridays. **If you have any Off-Market paper applications to submit, PMA will need those no later than 12pm on 12/15/17. Any paper apps taken after that will need to be faxed directly to Medica at 952-992-2511(keep a fax confirmation).**

Group Health

Timelines

If enrolling during the no participation/no contribution period (11-15 to 12-15), please have all applications to us by 12-10 if possible.

1-1 new group sales – all info in by 12-26.

Reminder: until all information is in, we cannot submit. This includes master application, employee applications, wage and tax/UI11 (with status codes) and binder check for the first month's premium.

1-1 renewals – if changing, need amendment by 12-20.

Aetna ACA Small Group cases need to be submitted to PMA by 12-8 for a 1/1 effective date.

Part D, MedAdvantage

December 7th is the final day of Annual Enrollment Period for MedAdvantage and Part D. Please be sure you are sending Julie copies of your enrollments. We must have those in order to pay commissions promptly and correctly.

What's New at PMA?

Holiday Closings:

Thursday, December 21st – 11:30am-1:30pm

Monday, December 25th

Monday, January 1st

Believe
in the magic of
Christmas

WELCOME!

Please welcome Patty Cardenas to our PMA team! She is our Medicare Supplement specialist and can be reached at patty@pmainsur.com.





PMA Donations

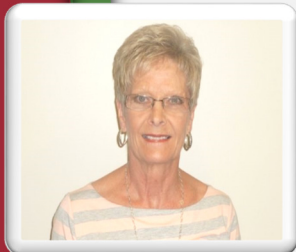
- ▲ Law Enforcement Coalition
- ▲ Lung Transplant Fundraiser
- ▲ Childrens' Toys/Sports Equipment in conjunction with Mutual First's "Giving Tree" benefitting the Child Saving Institute.

What's Up, Chuck?

Open enrollment for MAPD and Part D is just about over. However, Individual open enrollment has until December 15th. Wishing you and your families a very Merry Christmas and Happy New Year! We look forward to working with you in 2018!



EMPLOYEE SPOTLIGHT



Karen Gray
Commissions & Accounting Manager

Karen has been with PMA for 15 years, processing agent commissions and handling office accounting since September 2002. Prior to her employment at PMA, she worked secretarial and accounting duties for a local construction company for 14 years. Karen and her husband, Tom, have a daughter, Molly, who is married and has blessed Karen with 3 grandchildren- Emma (15), Connor (13) and Jenna (7). Karen enjoys playing golf when time permits, making trips to Texas to spend time with the grandkids, and getting together with friends.



Debbie Wilson
Commissions Representative

Debbie graduated from High School in Malcolm, NE, and went on to earn her HR Generalist Certificate from Creighton. She spent 4 years as an HR Coordinator and 10 years teaching Elementary school at a Christian School before her employment at PMA. She began to temp at PMA in June 2016, and became a permanent employee in November 2016. She's been happily married for 25 years and has a daughter, son and daughter-in-law and now an adorable granddaughter! Debbie enjoys spending time with her family, and her church family. She loves to entertain with Husker parties where she and friends would commiserate together.

